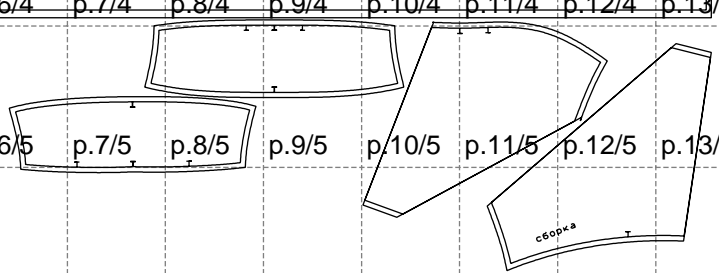


Not for print

Paper size: A4, size:2385.13 x1566.69 mm

размер полотна без припусков на швы 236.51 × 105.25 см ширина складки 2.12 см глубина складки 3.25 см												
p.1/1	p.2/1	p.3/1	p.4/1	p.5/1	p.6/1	p.7/1	p.8/1	p.9/1	p.10/1	p.11/1	p.12/1	p.13/1
p.1/2	p.2/2	p.3/2	p.4/2	p.5/2	p.6/2	p.7/2	p.8/2	p.9/2	p.10/2	p.11/2	p.12/2	p.13/2
p.1/3	p.2/3	p.3/3	p.4/3	p.5/3	p.6/3	p.7/3	p.8/3	p.9/3	p.10/3	p.11/3	p.12/3	p.13/3
p.1/4	p.2/4	p.3/4	p.4/4	p.5/4	p.6/4	p.7/4	p.8/4	p.9/4	p.10/4	p.11/4	p.12/4	p.13/4
p.1/5	p.2/5	p.3/5	p.4/5	p.5/5	p.6/5	p.7/5	p.8/5	p.9/5	p.10/5	p.11/5	p.12/5	p.13/5
p.1/6	p.2/6	p.3/6	p.4/6	p.5/6	p.6/6	p.7/6	p.8/6	p.9/6	p.10/6	p.11/6	p.12/6	p.13/6

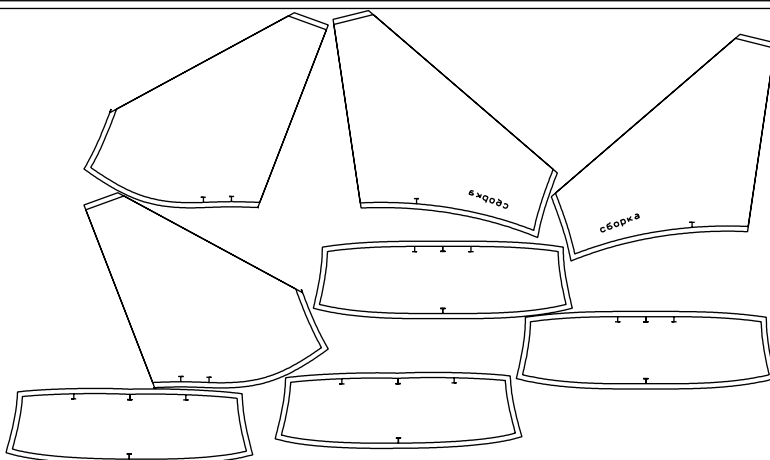


The diagram shows a technical drawing of a book cover layout. It features a grid of 13 columns and 6 rows of panels, labeled p.1/1 through p.13/6. The top row (p.1/1 to p.13/1) and the bottom row (p.1/6 to p.13/6) are solid lines. The middle rows (p.1/2 to p.13/5) are dashed lines. A horizontal line is drawn across the grid between the 4th and 5th rows. Overlaid on the grid are several technical drawings: a rectangular panel with a curved top edge (p.7/5, p.8/5), a trapezoidal panel (p.6/5), a large irregular panel (p.10/5, p.11/5), and a smaller irregular panel labeled 'сборка' (assembly) (p.11/5, p.12/5). Small arrows and dimension lines are present on these drawings.

Example

size:2385.13 x1960.32 mm

размер полотна без припусков на швы 236.51 × 105.25 см
ширина складки 2.12 см глубина складки 3.25 см



Maneken =1 ver.0

rz_1=170

rz_16=100

rz_17=85.4

rz_18=80.2

rz_19=108

rz_20=105.4

.
.
.